

Drill Press

Reference Number: 1726

Machine:

Model: 15

Serial: 17020

Year of MFG:

Description:

Single Spindle Drill Press

Electrics:

Reference Number: 1313

Machine:

Model: 2F8

Serial: 64333

Year of MFG: 1965

Description:

16" 4 Spindle Drill Press



16" Floor type 51 1/2 x 16" Adj. Steel table with gutter, hand feed, variable speed, V-Belt drive 4 Motors; 91) Gray mills coolant pump model H7804T

Electrics:

Volts 440, RPM - 1170, HP 2, Cycle - 60, PH-3

Reference Number: 1314

Machine:

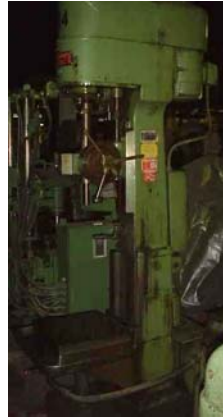
Model: 2F8

Serial: 66438

Year of MFG:

Description:

Edund Single Drill



Floor type, adjustable steel table with oil gutter, hand and power feeds, variable speeds, (1) Gusher coolant pump, Model 6P3-X6

Electrics:

HP 10, Phase 3, RPM 3450

Reference Number: 1329

Machine:

Model: O

Serial:

Year of MFG:

Description:

Arbor Press Manual Drill Press

Electrics:

Reference Number: 2681

Machine:

Model: 65-000

Serial: 1342237

Year of MFG:

Description:

Drill Press/ Vertical, Multi Spindle Drill



SPINDLE ASSEMBLY-SPND 1028, DRILL HEAD-HEAD1041, FXT
1042-FIXTURE

Electrics:

Reference Number: 1639

Machine:

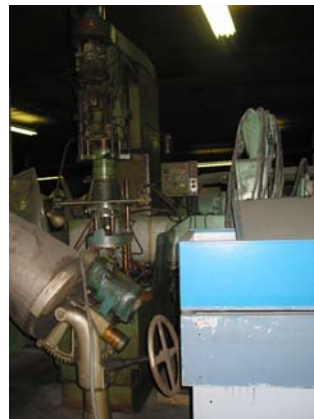
Model:

Serial: N128

Year of MFG:

Description:

Master Drill



Drill Press iwht Multiple Spindle Drive Head

Electrics:

Volts 480, Amps 23.0, Cycle 60, Phase 3

Reference Number: 1641

Machine:

Model: 3P3-S

Serial: 383-000

Year of MFG: 1965

Description:

12 Speed 1 Spdl. Drill Press

12 SPEEDS 50 - 100 RPM, 24" X 19" KNEE TABLE, 10" QUILL TRAVEL, 15" COLUMN TRAVEL, NO. 4 MORSE TAPER

Electrics:

Volts 220/440, AMPS 7.6, HP 5, Cycle 60, Phase 3



Reference Number: 1308

Machine:

Model:

Serial: KH20424

Year of MFG:

Description:

14" 5 Spindle Drill Press

Exclusive, floor type, 56 x 14" Adj. Steel table with gutter, hand feed V-belt drive, 5 Motors (1) Brown and sharpe coolant flung

Electrics:

RPM - 1725 HP - 1/2 CYCLE - 60 PH - 3



Reference Number: 1680

Machine:

Model: DU-500

Serial: 236-058272

Year of MFG:

Description:

Ettco Hydraulic Drilling Machine

With Rapid Travel, . Stroke is 4 1/4"

Electrics:

Volts 460, RPM 1800, Amps 21/10.5, HP 7.5, Cycle 3, Phase 60



Reference Number: 1818

Machine:

Model: 2B

Serial: 22271

Year of MFG:

Description:

Turret Drill

Electrics:

Volts 460, RPM 1720, Amps 2.5, HP 1, Cycle 60, Phase 3



Reference Number: 1740

Machine:

Model: 2J

Serial: 1558

Year of MFG:

Description:

Natco Drill



Natco Machine No. F3B-300, 8 Spindle arms - 2 extra upper spindles, 1 Shuttle table - air/oil pods (2)

Electrics:

Volts 460, AMPS 23, Cycle 60, Phase 3

Reference Number: 1772

Machine:

Model:

Serial: K6-1611

Year of MFG:

Description:

Natco Drill Press



HYDRAULIC UNIT: 1735 RPM, 1.5 HP 220/440 VOLT, 4.8/2.4 AMPS

Electrics:

Volts 220, RPM 850/1700, AMPS 12.2/17.2, HP 5, Cycle 60, Phase 3

Reference Number: 1775

Machine:

Model:

Serial: 13228

Year of MFG:

Description:

6 Head Drill Bank



Good Condition. Delta Rockwell Commander Multi-Drill Drill head Serial BC-004 Model 875 & Model-400 Serial BH51 & Serial 3219 Model 700 & Clausing Model 1687 Serial 523149

Electrics:

Volts 240/460, RPM 1740, Amps 2.8/1.4, HP 3/4, Cycle 60, Phase 3

Reference Number: 1776

Machine:

Model: H6-1177

Serial: SSP-403

Year of MFG:

Description:

Natco Drill



Electrics:

Reference Number: 1793

Machine:

Model:

Serial: 16228

Year of MFG:

Description:

Drill Press



Electrics:

Volts 220/440, RPM 1725, AMPS 23/11.5, HP 7 1/2, Cycle 60, Phase 3

Reference Number: 1798

Machine:

Model:

Serial: 37-1330

Year of MFG:

Description:

Drill Press



Single Spindle Drill Press with Air Feed

Electrics:

Volts 220/440, RPM 1750, AMPS 4.4/2.2, HP 1 1/2, Cycle 60, Phase 3

Reference Number: 1678

Machine:

Model: AD

Serial: A-347-8

Year of MFG:

Description:

2 Spindle Auto Drill Press

Series "A" Automatic

Electrics:

Volts 440, RPM 1700, HP 5, Cycle 60, Phase 3